

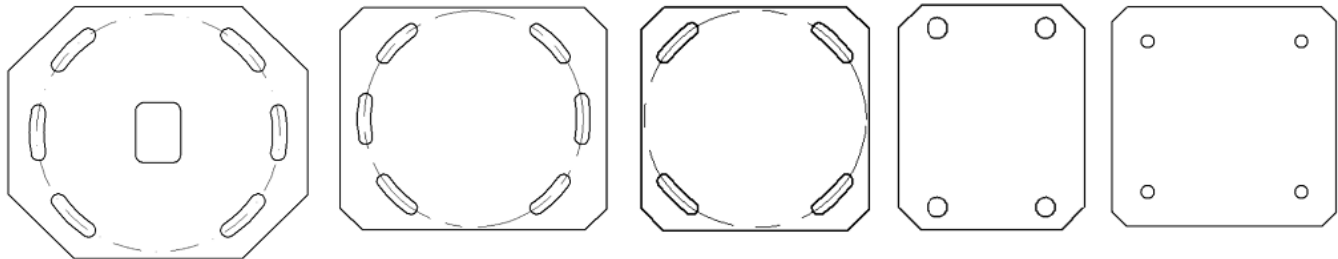
## Supply Update #4, February 2017

Inframat is a Supplier of Overhead Line Electrification Main Steel and SPS

**Our website is now LIVE – visit [www.inframat.co.uk](http://www.inframat.co.uk)**



**Structural Main Steel Supplier – UK1 and Series 1 Capable – RISQS Verified**



**Baseplates held in stock for nineteen types of bolted base mast**

### Capabilities Include:-



Masts : Series 1 and UK1 All Types  
Bridges and Portals : Series 1 and UK1 All Types  
SPS : Series 1 and UK1 All Types  
Kneebraces : UK1 Master Series  
Pile Adapter Plates : Series 1 and UK1 All Types

### Bespoke fabricated platforms & structures

Short leadtimes - Emergencies supplied in 4-5 days  
subject to galvanising capacity

## SMALL PARTS STEELWORK

**172/203/001**  
**Welded Angle**  
**Bracket**



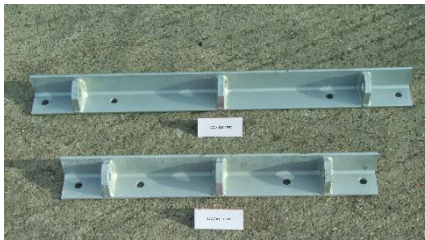
**171/089/001 & 171/090/001**  
**Isolator Base Connection**  
**Angle**



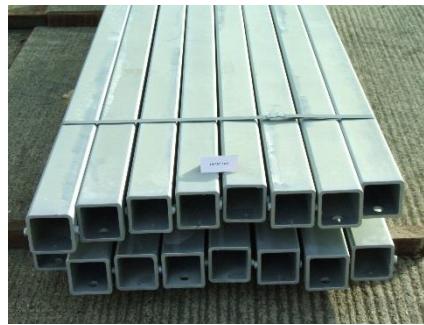
**169/826/001**  
**Top Hinge Pin**  
**Bracket**



**172/833/XXX**  
**Support & Registration**  
**Angle**



**179/801/XXX**  
**Support & Registration**  
**Tubes**



**161/650/XXX**  
**Angle For Drop Tube**  
**Support**



## **Other Industry Products and Industry Sectors Served;**

- Permanent Way Materials and Fabrications, Including Switches, Crossings, Turnouts and Fixed Buffer Stops
- Execution Class 2 Structural Steel Fabrications
- General Engineering Services and Products
- Highways – Pedestrian Guardrails and Fencing

**For more information and a full list of manufactured parts contact:**  
nickfowles@Inframat.co.uk or call 07713 196438

Quotations Supplied within 24 hours

